

Servo motor initialization

Launch Software TOYOTA Engineer
Li Yongshuai

Servo motor initialization is available under work support menu of AC of X431 TOP software. TOYOTA-16 connector or CAN BUS connector is used for non-CAN system. CAN BUSII connector is used for CAN BUS system.

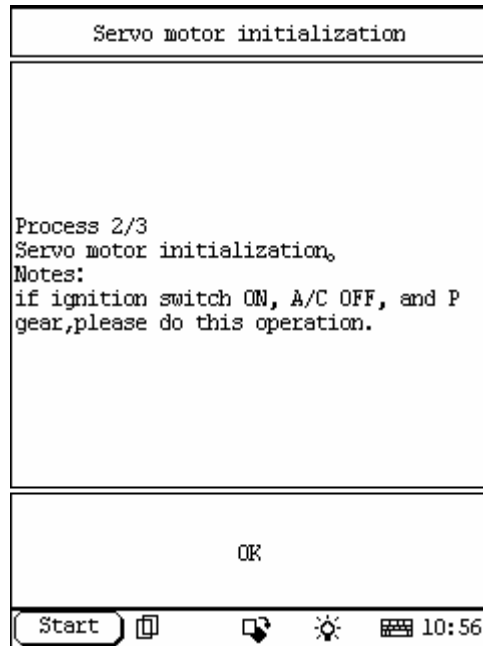
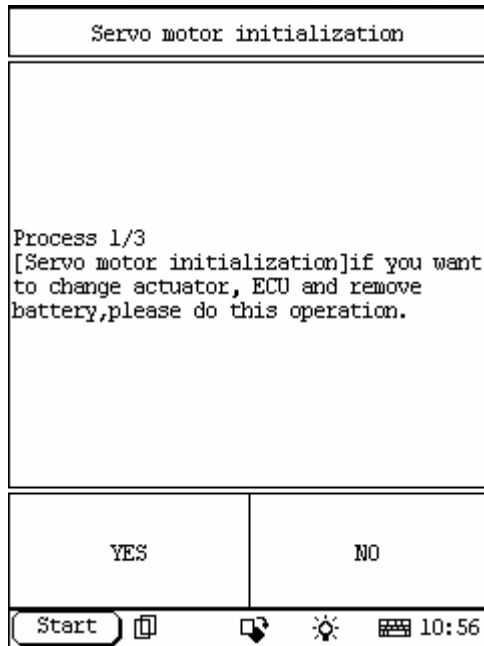
This function is used to initialize the parameter of actuator of servo motor, and to initialize the communication between ECU and actuator after replacing ECU or demounting battery.

The main procedures are introduced as below:

AIR CONDITIONER DIAGNOSTIC ITEM			
DATA LIST			
DTC INFO			
ACTIVE TEST			
WORK SUPPORT			
PAGE UP		PAGE DOWN	
HOME	BACK	PRINT	HELP
Start			10:55

WORK SUPPORT			
Servo motor initialization			
PAGE UP		PAGE DOWN	
HOME	BACK	PRINT	HELP
Start			10:56

After clicking FUNCTION MENU, the screen will display the Process 1/3 Menu. It will prompt you that: If you want to change actuator, ECU and remove battery, please do this operation. Press 'YES' to do servo motor initialization. Press 'NO' to exit.



After confirming this operation, the screen will display Process 2/3 Menu: servo motor initialization. Note: please do this operation with ignition switch ON, A/C OFF and P gear. After satisfying these conditions, press OK to enter Process 3/3 Menu: [servo motor initialization] begin. After DEF blinking indicator turn OFF, press OK, then this operation is finished.

