

How to Assign Renault key with X-431

Launch Software: Renault Engineer **Fisher**

With the development of auto electrical technology, electrical anti-theft technology is adopted on auto; thereinto electronic lock is very popular.

Generally speaking, electronic lock divides into control part and execution part in accordance with structure. Control part is composed of: input unit, memory, coding, discrimination, driver, display, alarm, safety unit and etc. The coding and discrimination unit are the key for the whole control part. Discrimination circuit is for comparing the memory code to the coding. When the two are the same, discrimination circuit send electronic signal to driver and display circuit. Execution part is usually a relay, which controls the ignition circuit with opening or closing the contact points.

Electronic lock, according to shape, also divides into electronic-key-lock, keypad- electronic lock, touch electronic lock, and etc. Now electronic-key-lock is usually used. This type has built-in CMOS chip to communicate with main control circuit by light, electricity, magnetism and other ways.

With the wide use of the electronic lock, the demand for key assign function is increasing. But usually we can't assign key manually, so there is a need to use tool for assigning key.

This article teaches you how to assign key with X431 for Renault (Scene & Laguna).

1. Assign key -- Scene

The first generation scene adopt key way for anti-theft.

Preparation:

1. X431(Installed with Renault software V22.00 or higher version);
2. Keys

Procedure:

Firstly, connect X-431 with vehicle socket, turn on X431 and enter *megane/scen* menu.

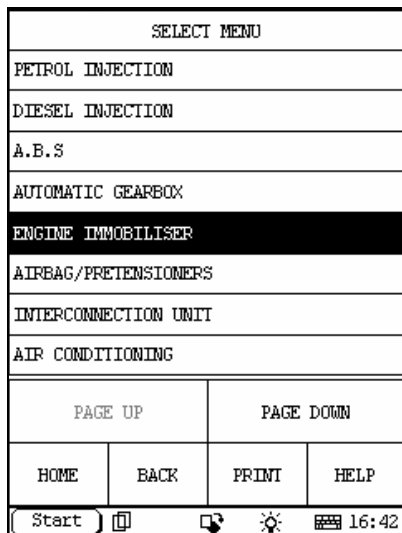


Fig.1

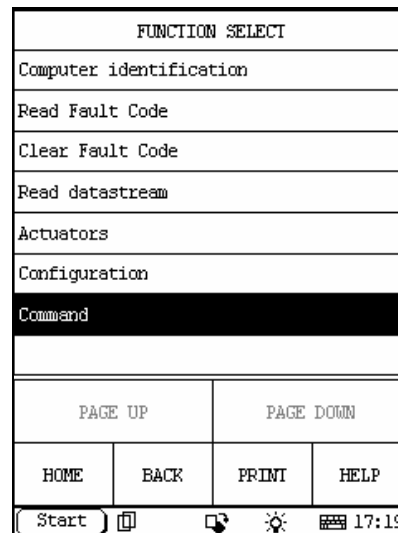


Fig.2

After entering *ENGINE IMMOBILIZER* menu(See Fig.1),select *Command* (See Fig.2),click *Key coding*(See Fig.3),the *enter access code* menu will pop-up. (See Fig.4)The code consists of numbers between 1--8 with 8 digits, such as:12345678. The code is different as

the different car. The code is given by manufacturer.

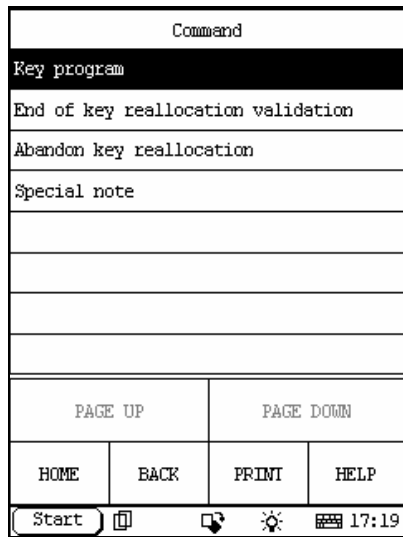


Fig.3

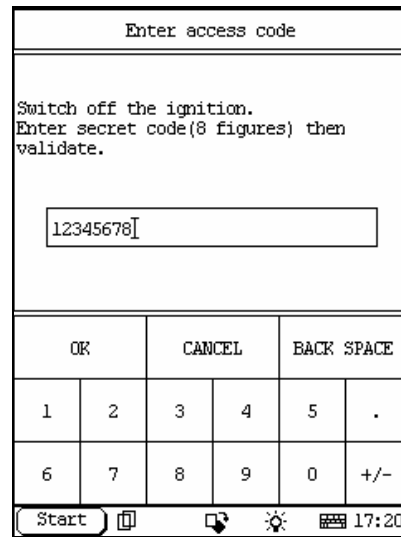


Fig.4

After entering code successfully, it will prompt that command transmission is over. The prompt indicates that the code is entered correct and can do assign key. Click 'OK', and then insert the first key, turn ignition switch on-off. Repeat the operation if assign more than one key (Note: All the keys must do the assign as the operation, otherwise the valid key before would be invalid after this assign). After assignation for all keys is finished, select *end of key reallocation validation* or *Abandon key reallocation* menu. See Fig.5

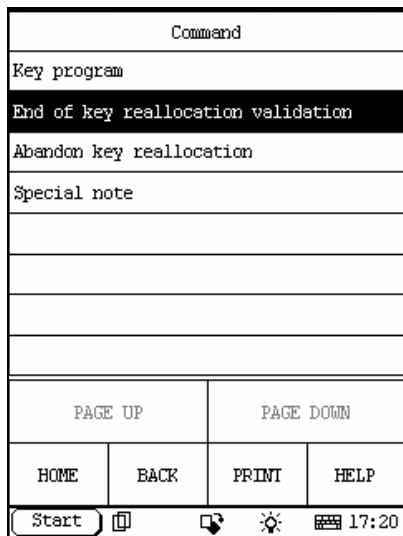


Fig.5

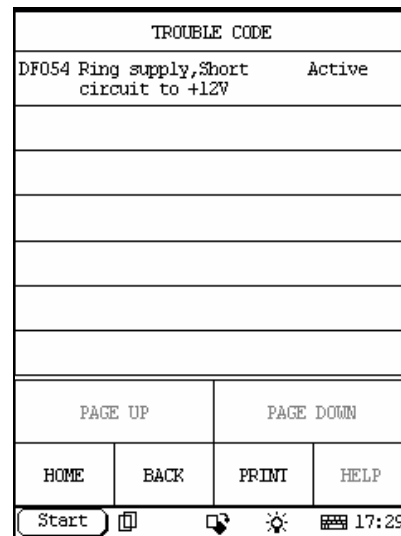


Fig.6

After the operation hereinbefore is finished, the key allocation is also finished (Note: the operation of key allocation must be finished in 5 minutes, otherwise the operation is invalid). Then, enter *remote key programming* menu, then it will display the number of valid key of the car. Then use each key to start the engine and turn on/off the door lock. If one of the keys can start the engine, but can't remotely operate the door lock. Now, you may read the trouble code, and you will find "DF054" is represent and its status is active. See fig.6. Then you can clear the trouble code with X431. When you perform reading trouble code again, its status become memory now. See fig.7.

Now, the key still can't remotely control the door lock. You can click "special note" on fig. 5. Then the solution will be given as shown in fig. 8.

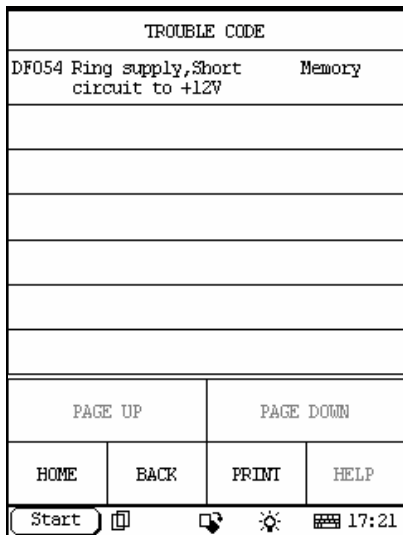


Fig.7

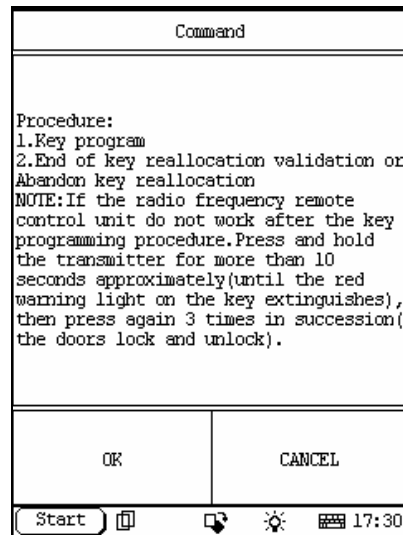


Fig.8

According to the instruction for operation, the problem will be solved. Then clear trouble code one more time, the assign key is completed.

2. Operation for Laguna

Laguna adopts the second generation anti-theft technology, and the key is card.

Preparation:

- 1).X431 (Installed with Renault software V23.00)
- 2).Key

Procedure:

Firstly, connect X431 to vehicle socket, start X431 to enter LAGUNA II menu, select **ENGINE IMMOBILIZER**. See fig.9. Then select **COMMAND**. See fig. 10.

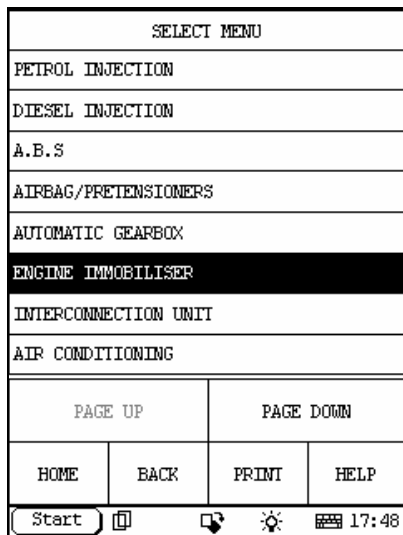


Fig.9

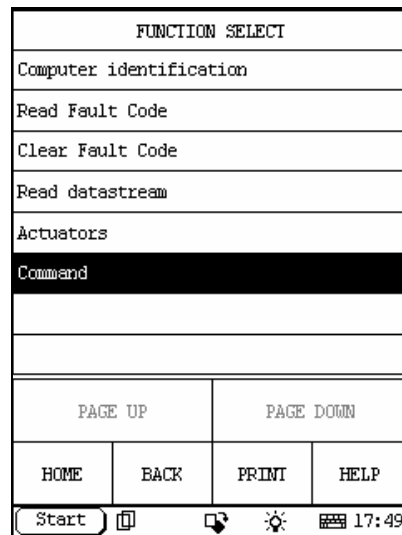


Fig.10

Then, click **Card programming**, See Fig.11, the **enter code** frame will pop-up, See Fig.12. The code consists of 12-digit number. Plug the card according to the prompt.

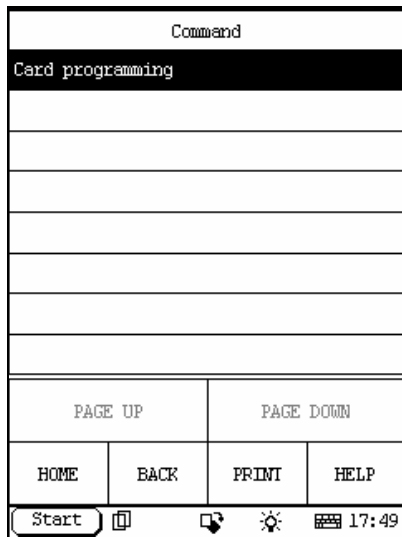


Fig.11

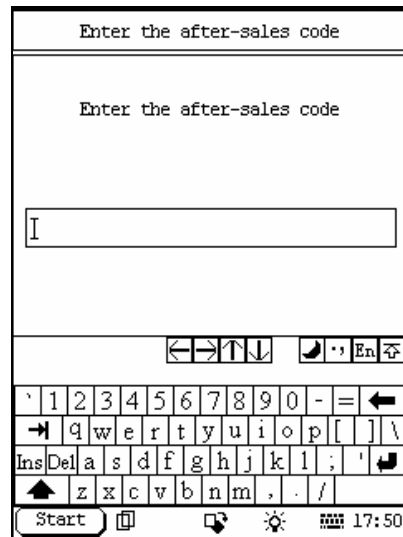


Fig.12

Then click **OK**, the operation for the first key is finished. See Fig.13. The system will ask if you want to program another card. Click **NO** to finish the assign key, click **YES** to assign the second key. (Note: The maximal number for assign key is 3.)

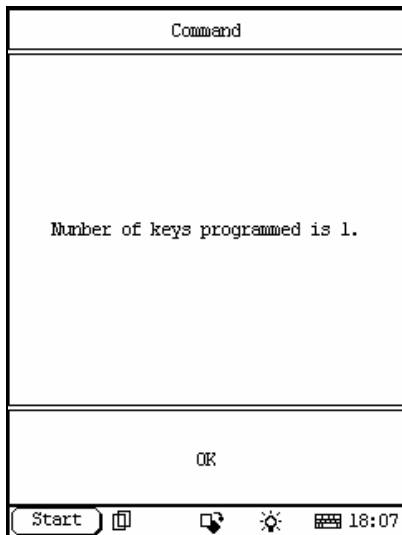


Fig.13

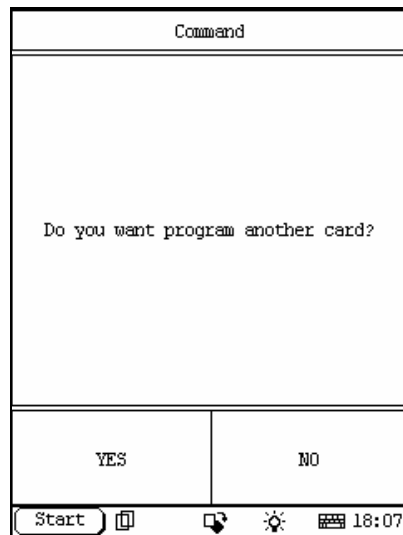


Fig.14

As mentioned above, the operation of assign key with X431 developed by Launch is easy, quick, safe and reliable. And this is the best choice for you.