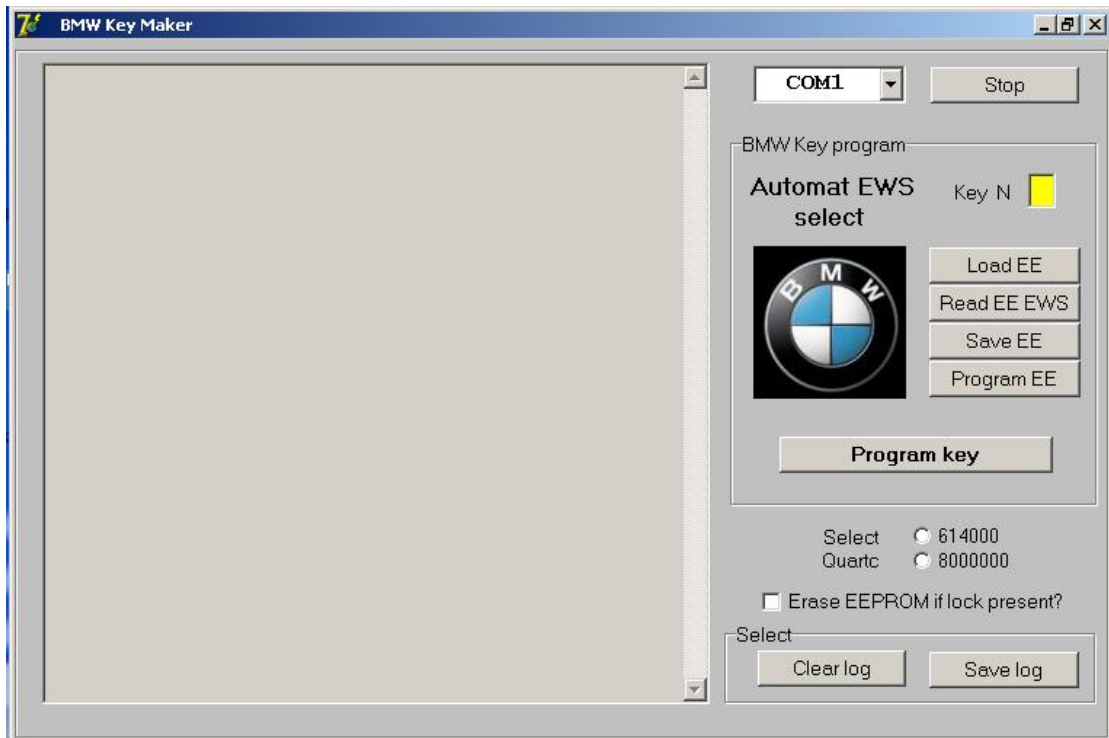


BMW KEYMAKER



BMW KEYMAKER Programme is for keyprogramming(PCF transponders 7930,7931,7935 This programme is very simple in using it and does not require additional equipment to work with EWS 2,3,3+.

Programme and adaptor **BMW KEYMAKER** are not used for 68HC11EA9 processor which has LOCK BIT on it.If a processor has LOCK BIT on it the programme will warn about it.

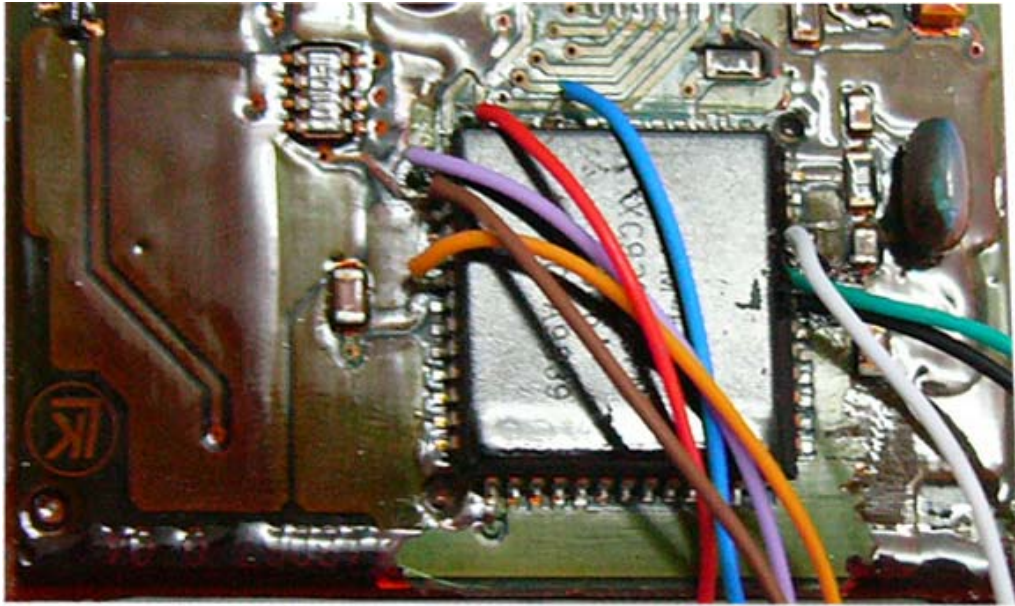
Operating EWS

Examine EWS carefully to find processor **68HC11EA9**(mask **2D47J,1D47J,0D46J**).Cut **PIN 20** from the processor on **EWS** motherboard as it is shown in the picture.



Choose quartz type 614000(EWS 2) in the programme or 8000000(EWS 3,3+). Then connect the processor 68HC11EA9 using the connector

following this picture.(**WARNING!!!Adaptor BMW KEYMAKER should be cut from power supply during this!!!**)



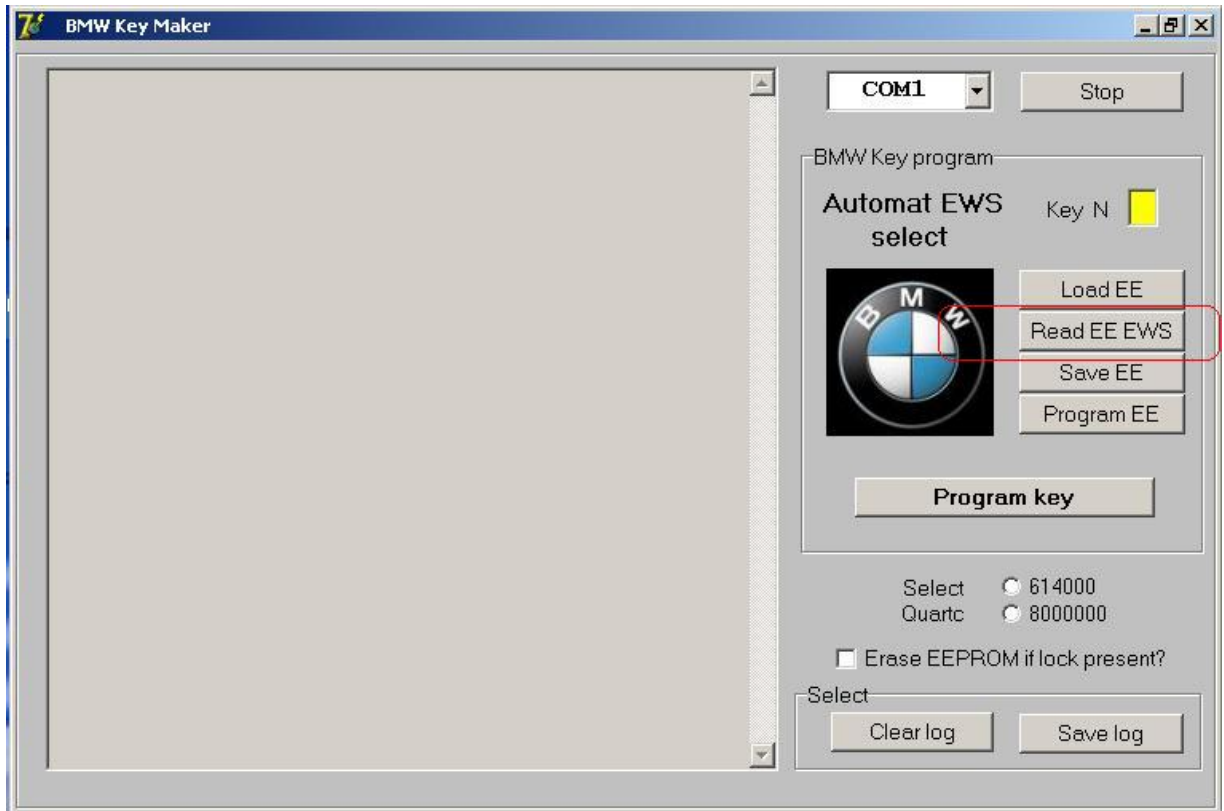
Connect explanation

Black	to processor's Pin1
Green	to processor's Pin2
White	to processor's Pin3
Blue	to processor's Pin17
Red	to processor's Pin20
Purple	to processor's Pin21
Brown	to processor's Pin22
Orange	to processor's Pin26

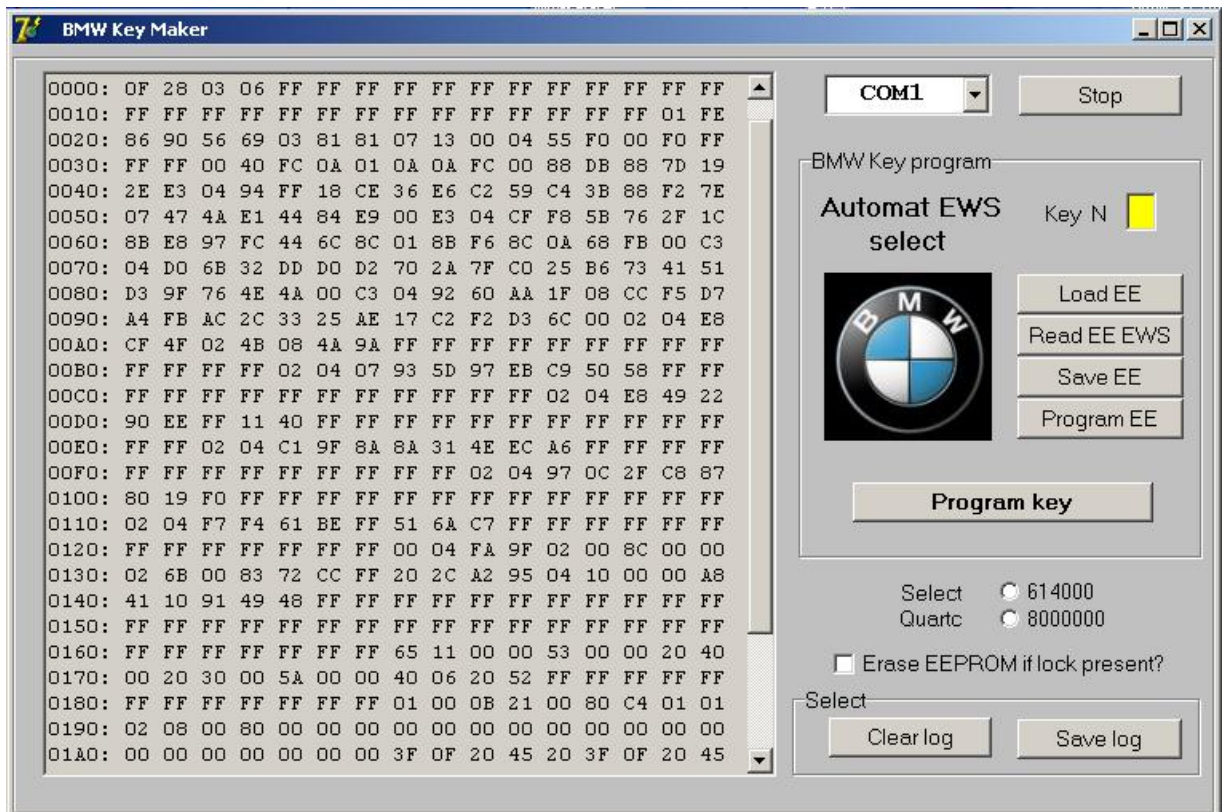
After you connect the processor connect power supply to BMW KEYMAKER.



In the programme press button READ EE EWS.

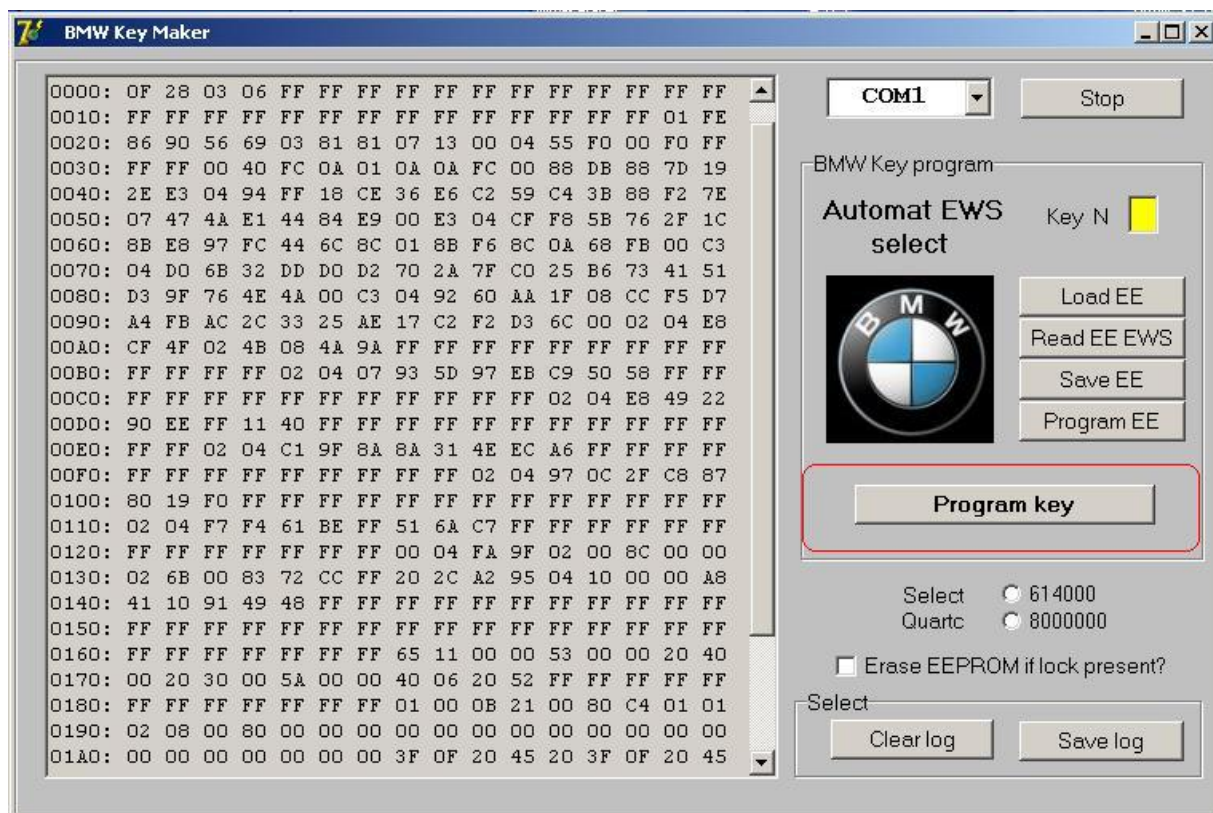


After reading the processor you will see dump in screen. Replace pin 20 after reading processor is over.



Write key number in the window from 0 to 9(alltogether there are 10 keys)which you want to programme.

Insert key or transponder into the keyhole of the programmer and press PROGRAMME KEY button.



Key or transponder will be programmed in 20 seconds. Repeat all the operations for the other key numbers.